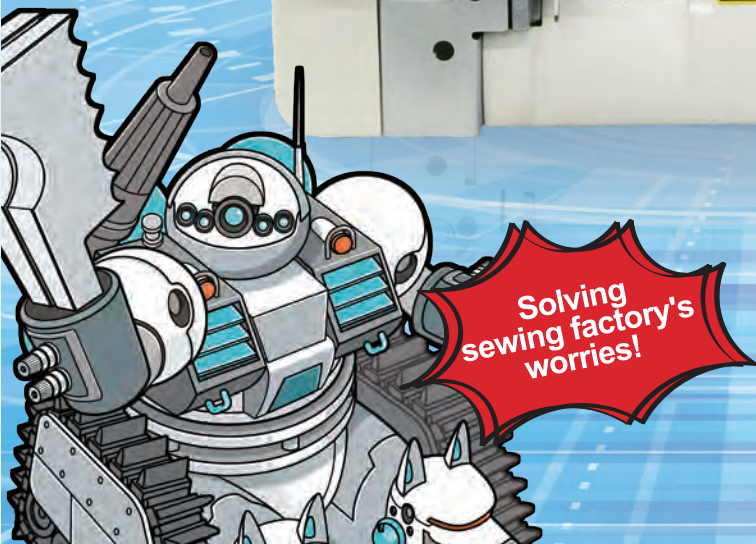
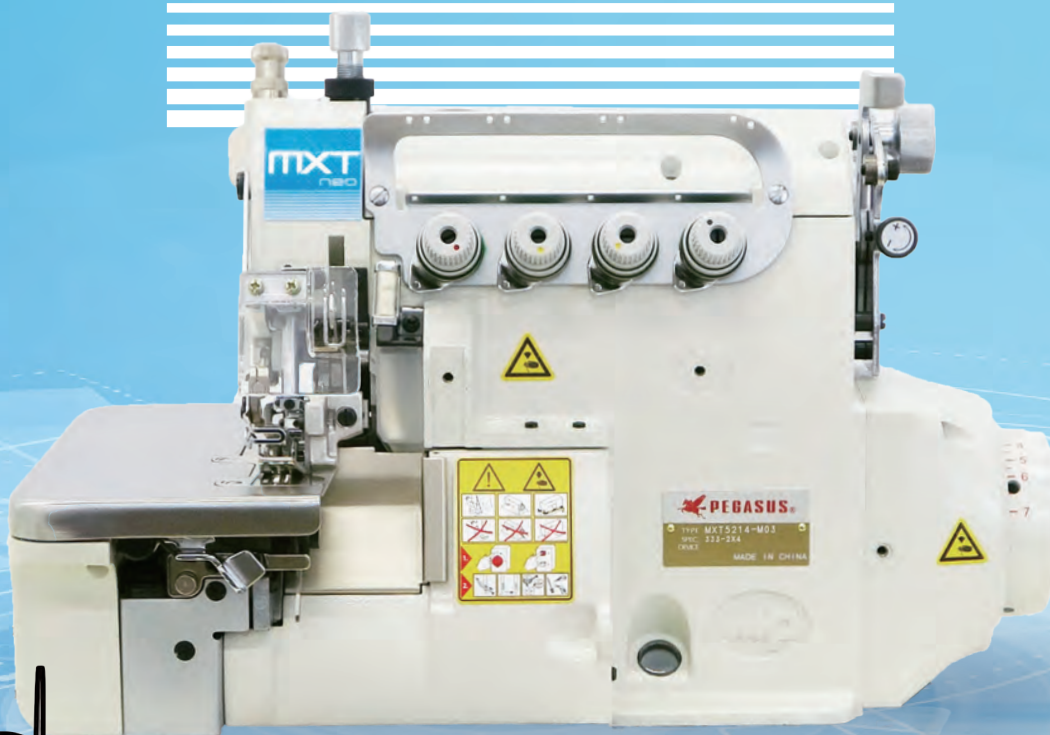


MXT series

MXT3200 Variable top feed,safety stitch

/ MXT5200 Variable top feed overedger

MXT neo



Solving sewing factory's worries!

MXT Sewing robot come to the rescue!

Factory manager has been suffering...

Client: Is your factory capable of making clothes with various types of fabric?

Orders from clients are always difficult, such as sewing different materials together...

Because.....

We can't handle difficult orders only with new operators

I don't know what to do...

I want to expand my business, but...

Fear not, MXT robot is here from planet of sewing.

What a surprise!

BAAAAA!!!

I'm here to support difficult operations such as sewing different materials together.

Really!?

Yeah, I promise!

Top feed dog-calibur!

He's sewing denim, swimsuits, work clothes and any different materials without even blinking!!

Thank you MXT robot!

See ya!

ZZZZZZ

Next day

Manager!!

That was a strange dream.

MXT has arrived from Pegasus Sewing Machine!!

BAAAAA!!!

Clamp! Grip!

It feeds with both upper and lower feed dog so it can sew without shifting!

Shhhhhhhhh!! This is great!!

Even the new operators can sew well with this!

and they all sewed happily ever after

Super easy adjustment of stitch length!

All you need to do is push the button and turn the machine pulley.



Avoid stitch skipping and broken material!

HR device reduces the heat generated on the needle and smooth the movement of the thread, it will give stable seams.



Max speed!

MXT 6700sti/min.



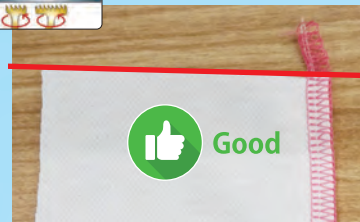
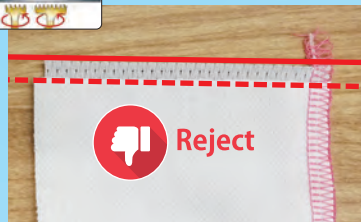
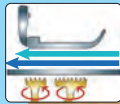
- Pegasus original *DDM!
- Designed and manufactured completely by PEGASUS
 - Certified by CE as all-in-one type direct drive motor
 - Compact appearance with exceptional ease of operation

*Direct Drive Motor

CASE
1

Ply shifting

In case of sewing slippery fabrics together, misalignment occurs when the bottom fabric advances first and the top fabric lags behind.



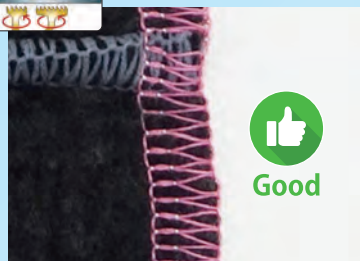
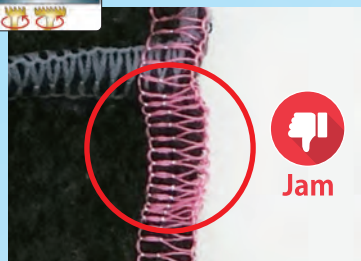
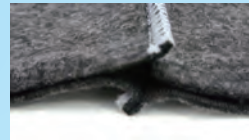
TOP FEEDING



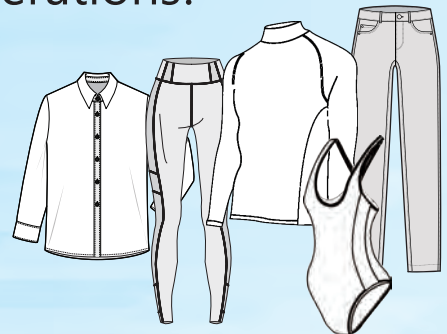
CASE
2

Seam jamming

Effective for thick cross seams that frequently cause jamming



MXT! The solution
for difficult fabric and operations!



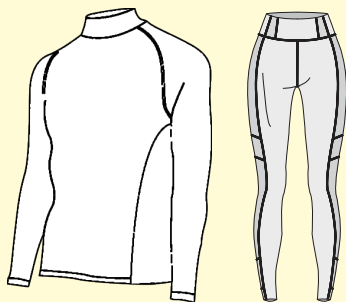
MXT series

MXT3200 Variable top feed, safety stitch

/ MXT5200 Variable top feed overedger

All you need is MXT,
for thin to thick, even the knit,
woven and super thick denim fabric.

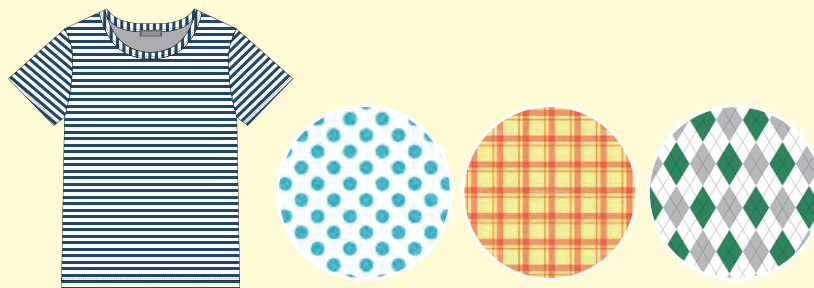
— High stretch garments —



— Stitching over thick areas and cross seams —

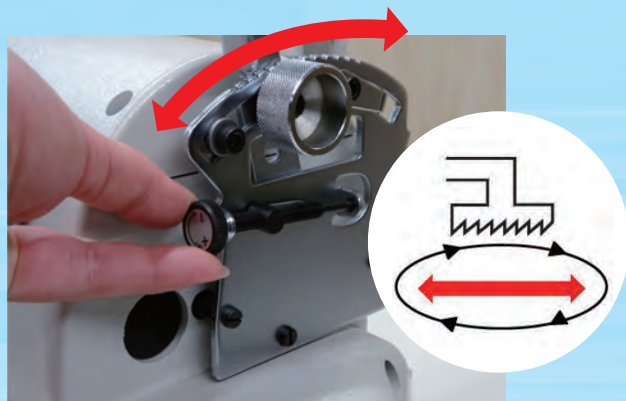


— Matching designs of patterned fabric —



Super easy top
feed adjustment!

Just loosen the knob and adjust it as you like.
Also adjustment knob allows fine tuning.



Hard to leave presser
foot marks!

Can adjust the float of the presser foot.





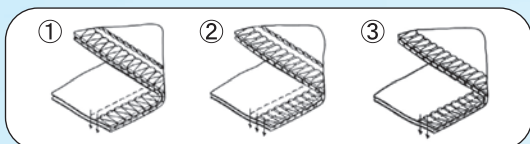
Option

KS Vertical type vacuum thread chain cutter

PL Presser foot lift

KH Flat type vacuum thread chain cutter

LC Pneumatic lint collector



Seam	Application	Fabric weight	Subclass	No. of needles	No. of threads	Needle space (mm)	Overedge width (mm)	Max. stitch length (mm)	Diff. feed ratio	Presser foot lift (mm)	Max. speed (sti/min)	Needles	Option
①	Plain seaming	Medium to heavy	MXT3216-03/333	2	5	5	5	3.8	0.7-2	5.5	6,700	DCx27 #14(90)	KH/PL/LC
②	Plain seaming	Medium to heavy	MXT3244-03/333	3	6	3	2+4					DCx27 #11(75)	
		Heavy to extra heavy	MXT3244-A04/435K	3	6	5	3+4	5.0	0.8-1.5	7	6,300	DCx27 #21(130)	
③	Plain seaming	Medium to heavy	MXT5214-M03/333	2	4	2	4	3.8	0.7-2	5.5	6,700	DCx27 #9(65)	KS/PL/LC

PEGASUS SEWING MACHINE MFG.CO.,LTD.

5-7-2 Sagisu Fukushima-ku, Osaka 553-0002 Japan TEL : +81-6-6458-4739 FAX : +81-6-6454-8785

© 2022 PEGASUS SEWING MACHINE MFG. CO., LTD. Catalog NO.103145 Produced July 2022.



<https://www.pegasus.co.jp/en/>